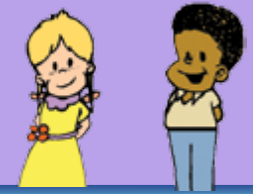




A Publication of Alpha Omega Institute

ANSWERS TO KIDS THINK AND BELIEVE TOO!

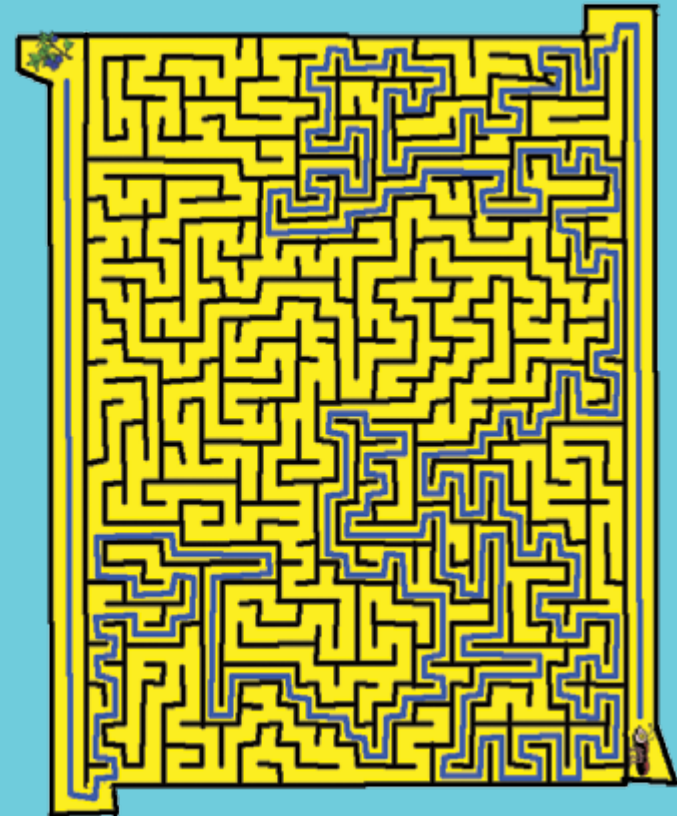
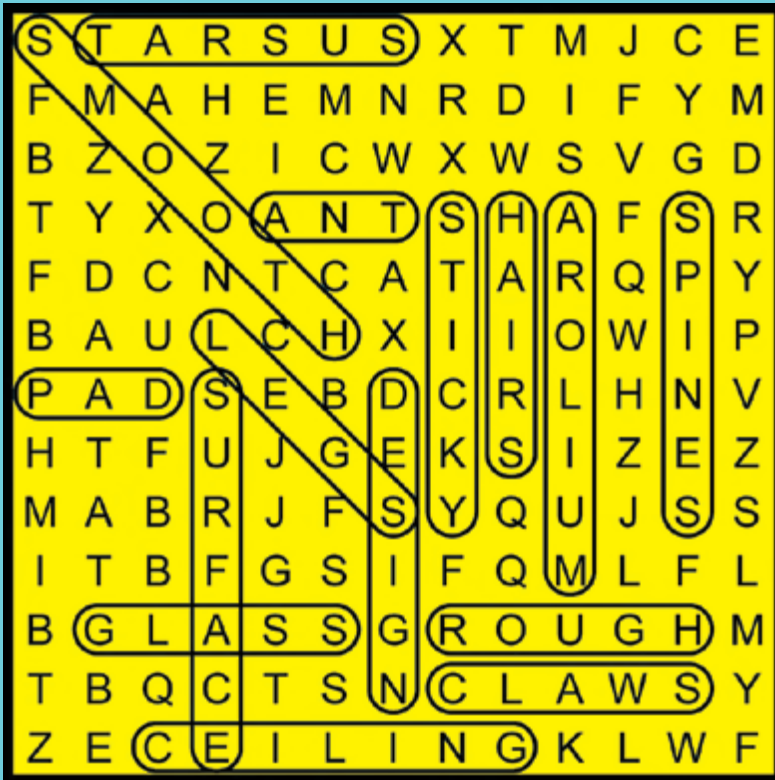


September-October 2025

WORD SEARCH

Look for words used in "THE ANTS' STICKY FEET" in the puzzle below from the WORD LIST below. The hidden word might be up, down, sideways, slanted, or backwards.

Worker ants are all female. Help the ant in the lower right hand corner find her way through the maze to the tasty blueberries in the upper left hand corner.



WORD LIST

ANT AROLIUM CEILING CLAWS DESIGN GLASS HAIRS LEGS
PAD ROUGH SMOOTH SPINES STICKY SURFACE TARSUS

Adapted from <https://krazydad.com/mazes>

Puzzles by Lanny Johnson © AOI 2025