



September-October 2007

THE FALSE-EYED FROG*

by Lanny and Marilyn Johnson

A snake slithers along the floor of a rain forest in South America. With its heat-sensitive tongue, it senses prey ahead. Getting closer, the snake can see a plump, juicy frog ahead. Easing forward, the snake prepares to strike, and in the blink of an eye the frog is gone! Where the frog was, is now a big head, with a nose, mouth, and two black and blue eyes. Startled, the snake, now thinking he is about to be eaten, quickly leaves. The snake has just faced a false-eyed frog (also known as the portrait frog).

The skin of a false-eyed frog is amazing. It is made up of spots of black, blue, brown, gray, and white! When the frog is startled, the skin instantly changes its colors, simply by hiding some of the colors.

When an animal comes along that wants to eat him, the frog quickly turns around so that its back is facing the enemy. In the instant that the frog is turning, the colors on his back change into large eyes with black pupils complete with blue irises around them. The false-eyed frog puts its head close to the ground, raises

its rear up high, and tucks its hind legs underneath his "eyes." The legs now look like a large mouth! Above the "mouth," where the frog once had a tadpole's tail, appears a nose! The frog also lifts two toes on each back foot, and curls them out so that they look like claws. By moving his legs, the frog's "mouth" and "claws" appear to move. In one second, what once looked like a tasty morsel to the enemy now looks like a large frightening head!

The scary "face" will scare away most animals. However, some animals are not so easily frightened. If the fake "eyes," "mouth," and "claws" do not make their attackers run away, the false-eyed frogs use another defense. Their bodies make a thick, smelly ooze from near their "eyes." This ooze and stink usually makes even the bravest attackers retreat.

The false-eyed frog never sees the "face" and "eyes" on its back, so it could not have put them there. Amazingly, even though it can't see or know what will appear on its back as it spins around, the false-eyed frog knows to raise its rear up high, and tuck in its hind legs.

THE PIPE SNAKE*

Living in Southeast Asia, where the frightful cobra lives, is a snake called the "pipe snake" because it is slightly flat at both ends. It is hard to tell which end is the front or back.

If an enemy gets close, the pipe snake flattens out the tail end, and raises it in the air. The flattened out tail looks like the "head" of a

mad cobra, complete with black and white bars, and a red tip for a "mouth." With its "head" raised, looking ready to strike, the pipe snake's body is coiled, protecting the hidden real head! If the attacker draws back and leaves (which most do), the pipe snake uncoils and swiftly crawls to safety.

The pipe snake is "born" with this protective coloration and ability to flatten its tail. Pretending to be a cobra is not something it learned. The pipe snake knows how to do it as soon as it is "born."

Where did the false-eyed frog and pipe snake get the amazing defense disguises they were "born" with and the

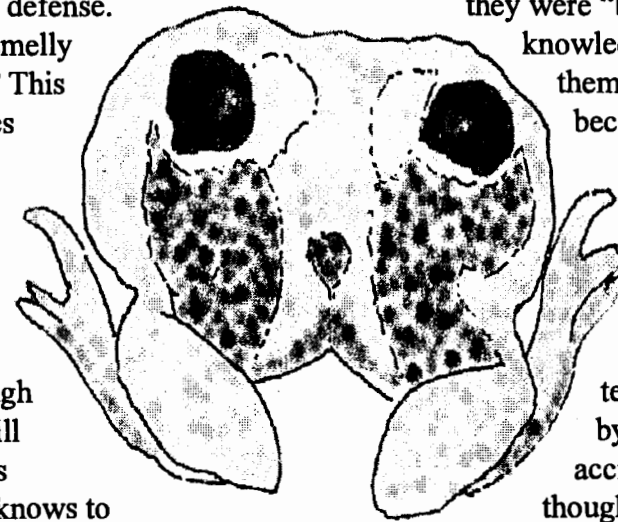
knowledge of how to use them? They are there because of information patterns (codes) programmed into their DNA. Where did these codes come from?

Evolution would teach it happened by chance and accident. But accidental, thoughtless, unplanned

codes do not make anything;

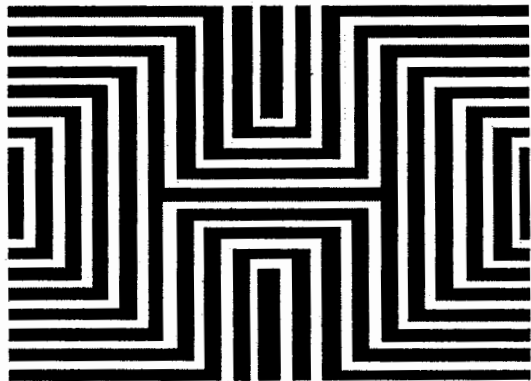
it takes intelligence to make a code with order and design! It certainly looks like an Intelligent Creator designed the false-eyed frog and pipe snake with defense systems for survival in our fallen world. That Creator is God!

*Based on information from Evolution Encyclopedia (www.evolution-facts.org.)



TORTOISE	TRIANGLE	AND	GREEN	OWL	NO
PORPOISE	MARVEL	DIAMOND	CROCODILE	FOR	PURPLE
RECTANGLE	ROBIN	ORANGE	SATAN	OTTER	EMERALD
HIMSELF	DINOSAUR	DOLPHIN	OPAL	IS	OVAL
SQUARE	TRANSFORMED	CHICKEN	PINK	LIZARD	INTO
FINCH	MANATEE	AN	GARNET	ANGEL	HEXAGON
OF	BLUE	TURTLE	WALRUS	CIRCLE	LIGHT
AGATE	2	HAWK	CORINTHIANS	RED	AMETHYST
YELLOW	BEAVER	11:	PENTAGON	EAGLE	SPARROW
SNAKE	ALLIGATOR	BROWN	SAPPHIRE	14	WHALE

BEWARE!
 The false-eyed frog and pipe snake trick others into thinking they are something that they are not. They do this for defense. There is someone else in the world that also tricks people into thinking he is someone he is not. Solve the puzzle to find out what the Bible says about



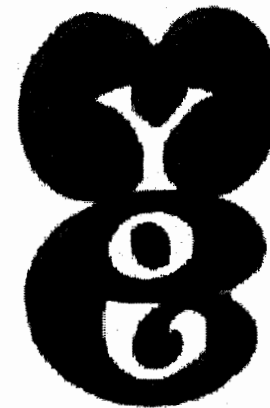
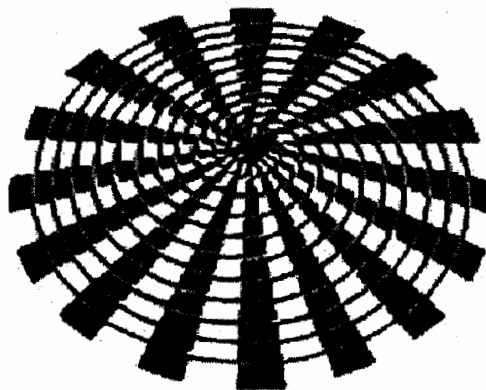
DO YOU SEE THE DIAMONDS?
 THEY ARE NOT THERE! THERE
 ARE A LOT OF RECTANGLES!



DO YOU SEE GOOD OR EVIL?
 THEY ARE BOTH THERE!

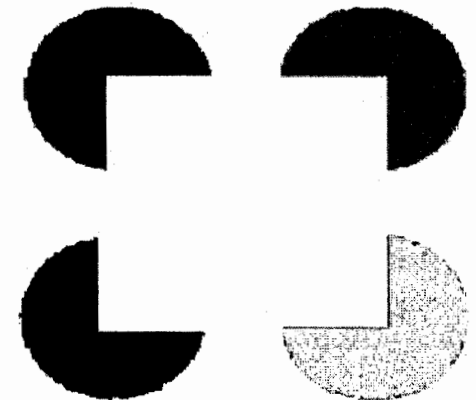
THING ARE NOT ALWAYS WHAT
 THEY APPEAR! WHAT DO YOU SEE
 WHEN YOU LOOK AT THE PICTURES?

DO YOU SEE THE SPIRAL?
 IT IS NOT THERE! THERE ARE
 A LOT OF CIRCLES!



DO YOU SEE YOU OR
 ME? THEY ARE
 BOTH THERE!

DO YOU SEE
 THE SQUARE?
 IT IS NOT THERE!
 THERE ARE
 4 "PAC-MAN"
 WITH THEIR
 MOUTHS OPEN



CROSS OUT ALL

1. Colors
2. Water Mammals
3. Birds
4. Reptiles
5. Gems
6. Shapes

Kid's Think & Believe Too is published bi-monthly by Alpha Omega Institute, P.O. Box 4343, Grand Junction, CO, 81502. Editors: Lanny and Marilyn Johnson. Kid's Think & Believe may be freely copied and distributed in its entirety for non-commercial use. AOI is a tax-exempt non-profit organization under Section 501(c)(3) of the Internal Revenue Code, and a member of ECFA. © 2007 Alpha Omega Institute www.discovercreation.org