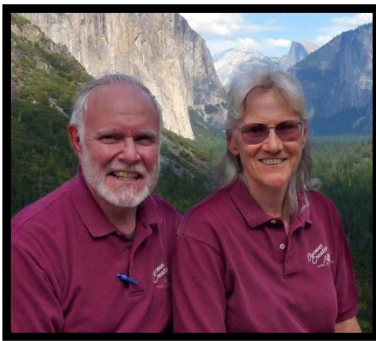




Information about Scheduling a *Discover Creation* Seminar with Dave and Mary Jo Nutting

***“The #1 reason students give for rejecting
the Gospel is evolution.” (Evangelist and author, Mark Cahill)***

There is a huge battle raging for the hearts and minds of our children, youth, and adults! We are so glad you see it and are interested in hosting a *Discover Creation* seminar! We trust this information will be helpful in planning an exciting, informative creation seminar for your church, school, homeschool group, or other groups in your community.



Below you will find:

- Some General Information
- Suggested Schedules
- Topics & Descriptions
- Speaker Bios
- Nitty Gritty Details (Cost, Equipment Needs, etc.)

Please look over the information, and then contact us to discuss dates, schedule, and other specifics regarding your seminar: 970-523-9943 or 970-250-2923 (cell); davenutting@discovercreation.org. We look forward to serving you.

Dave and Mary Jo Nutting

We present seminars for a wide range of ages and interests:

Churches, Christian Schools, Homeschool, and General Audiences:

We aim at keeping our programs informative, fun, and interesting for children, teens, and adults. We use colorful, high quality visuals, fascinating information, and appropriate humor to help hold attention and get the points across. We also strive to present the information in a clear, but respectful way, so that even skeptics will feel welcome. Presentations can be tailored for specialized audiences as needed.

Youth:

Even if you have to “bribe them” with pizza or offer them a free ski trip, get them there! Youth are being hammered by evolution and other philosophies. According to polls, 75-90 % of church youth drop out of church by the time they graduate from college. At many churches, many do not show up for anything except the sermon time. This is a major reason for us doing the sermon since it allows us to speak to them in an area where they are really struggling. Be creative to get them to the program. If you have access to a school or university group, please include them in our schedule during the time we are with you.

Special Children's Programs:

Even though children can understand much of the material presented in regular sessions, one of our Children's Ministry Teams may be available to conduct a concurrent program specifically designed for elementary school age children. They use PowerPoint-illustrated teaching, crafts, hands-on science activities, and puppets to convey the message. Children love it and learn a lot! Alternatively, we can provide teaching and activity suggestions so your children's ministry team can coordinate with our programs.

University, Public School, and Civic Presentations:

These fast-paced, illustrated programs help students and adults learn to ask the right questions, apply the scientific method, and separate fact from fiction. Topics are tailored to the setting, both in content and level. For public schools, we focus on critical thinking and the scientific aspects of the question of origins, encouraging students to study the evidence themselves and come to their own conclusions. Time is included for questions and discussion whenever possible.



Suggested Schedules

The following schedules and topics effectively cover the basics of the Creation/Evolution debate. Note that the Wednesday evening can be offered as a combined Youth Rally for 2 or more churches. A supplemental morning for homeschoolers is also included. Additional time slots can be added for Christian schools, public schools, or universities. Customized schedules can be discussed for special circumstances. For shorter seminars, we will choose from these topics. (See Topic Descriptions on next page.)

Sunday Seminar (with optional Wednesday evening Youth Rally)

Sunday Morning

Sermon Time It's a War Out There: The Battle for Our Children's Hearts and Minds!
Sunday School Blind Chance or Grand Design?

Sunday Evening

5:00-6:00 PM Meal (Potluck)
6:00-6:15 PM Opening (Introduction, Announcements, and Music)
6:15-7:00 PM Was Darwin Wrong? (Part 1: Fossils and Cavemen)
7:00-7:15 PM Break / Resource Tables
7:15-8:00 PM Was Darwin Wrong? (Part 2: Biological "Proofs" of Evolution)
8:15-8:30 PM Optional: Q&A

Monday Evening

6:30 -6:45 PM Opening (Announcements and Music)
6:45-7:30 PM Dinosaurs, Dragons, and Man
7:30-7:45 PM Break / Resource Tables
7:45-8:30 PM Creationist Tour of National Parks: Time is Not the Hero of the Plot!
8:30-8:45 PM Optional: Q&A

Wednesday Evening

Youth Rally (See schedule below. Adults are encouraged to come too!)

Mid-week Seminar (includes Wednesday evening Youth Rally)

Tuesday Evening

5:30-6:30 PM Evening Meal (Potluck or meal provided by church works well)
6:30-6:45 PM Opening
6:45-7:30 PM Blind Chance or Grand Design
7:30-7:45 PM Break / Resource Tables
7:45- 8:30 PM It's a War Out There: The Battle for Our Children's Minds!

Wednesday Evening (Could be used as a combined Youth Rally with other churches)

6:00-6:45 PM Pizza Party!
6:45-7:00 PM Opening (Introductions, Announcements, and Music)
7:00-8:30 PM Was Darwin Wrong? (Fossils, Cavemen, and Biological "Proofs" of Evolution)
8:30-9:00 PM Optional: Q&A

Thursday Evening

6:30 -6:45 PM Opening (Announcements and Music)
6:45-7:30 PM Dinosaurs, Dragons, and Man
7:30-7:45 PM Break / Resource Tables
7:45-8:30 PM Creationist Tour of National Parks: Time is Not the Hero of the Plot!
8:30-8:45 PM Optional: Q&A

Supplemental Morning Program (For homeschool families and Christian schools – others welcome!)

(We assume homeschoolers will participate in one of the above seminar schedules so these are supplemental topics.)

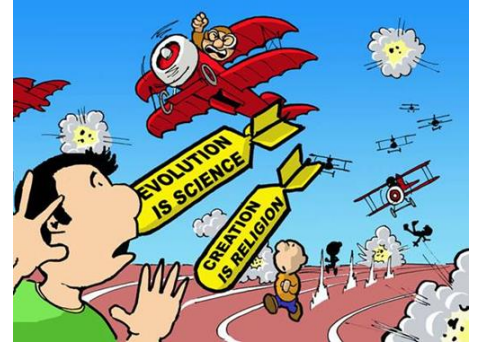
9:00-9:15 AM Opening (Introductions, Announcements, and Music)
9:15-10:00 AM Bible, Science and Earth History Part 1 (Focus on Creation)
10:00-10:15 AM Break
10:15-11:00 AM Bible, Science, and Earth History Part 2 (Focus on Fall, Flood, and Beyond)
11:00-11:15 AM Break
11:15-12:00 AM What to Do When You Don't Have an Answer

Topics and Descriptions:

Main Programs

1. It's a War Out There: The Battle For Our Children's Hearts and Minds (Dave Nutting)

According to youth evangelist, Mark Cahill, "The number one reason young people give for rejecting the Gospel is evolution." Few adults understand the intensity of the attack on their children's faith which escalates to a ferocious battle in "higher academics." Students in public schools, Christian schools and homeschools, alike are not immune to the systematic "de-faithing" they will likely encounter from schools, universities, friends, media, and the internet. Having spoken to many university audiences over the years and seeing what has derailed even solid kids, Dave's impactful presentation will sound the alarm and help you prepare them well! Parents, make sure your middle school and teens (and even upper elementary) students also attend this session.



2. Blind Chance or Grand Design? (Dave or Mary Jo Nutting)

Design in nature points to an Intelligent Designer, not random chance and accidents. Fascinating examples from the living world support the claim that "The evidence cries out: Creation!" This fun and delightfully illustrated program is suitable for both children and adults.

3. Was Darwin Wrong? Part I: Fossils and Cavemen (Dave Nutting)

It is now over 150 years since the publication of Charles Darwin's culture-changing book, **On the Origin of Species**, but the question remains, "Was Darwin Wrong?" Dave Nutting gives compelling reasons from the fossil record to show that evolution doesn't hold up. He exposes the battle for your mind and demonstrates how people get fooled into believing evolution by the pictures they see. Using examples from the fossil evidence and artistic reconstructions, Dave encourages children, youth, and adults to ask the right questions, to evaluate so-called "scientific" evidence, and to stand firmly on God's Word.

4. Was Darwin Wrong? Part II: So-called "Proofs" of Evolution (Mary Jo Nutting)

Evolution is taught as "fact" in textbooks, schools, museums, national parks, and the media, but has modern science really confirmed Darwin's theory? Mary Jo Nutting shows why the common "proofs" of evolution do not hold up to scientific scrutiny, but instead affirm the Biblical account of creation and the fall. This understandable, beautifully illustrated program helps you and your family ask the right questions so that you will not be taken in by "accepted" scientific dogma and typical textbook arguments.

5. Dinosaurs, Dragons, and Man: Have People Really Seen Dinosaurs? (Dave Nutting)

How do dinosaurs fit with the Bible? Have people ever seen dinosaurs? What's the evidence? Evolutionary interpretations lead children astray. Ancient artwork and artifacts from around the world depict creatures that look like dinosaurs. Did these ancient artists base their artwork on dinosaurs they had actually seen? Join "Dinosaur Dave" Nutting as he paints a new view of dinosaurs – one usually not taught in museums, schools, or books. Using vivid color visuals, Dave presents the evidence and a view of dinosaurs that is consistent with the Bible. Bring your skeptical friends!

6. A Creationist Tour of Our National Parks: Time is Not the Hero of the Plot! (Dave Nutting)

Geologist, Dave Nutting, takes you on a virtual tour of national parks and other locations. He shows the "other side" of the geologic story – the side that park rangers don't usually mention. Does it take millions of years to form geologic features? Dave says, "No!" He shares from research and field study how deep canyons were carved quickly through solid rock in as little as one day. Giant ripple marks, massive gravel deposits, enormous "now dry" waterfalls, and other fascinating features all point to catastrophic floods in the past. Learn how these could relate to Noah's Flood and subsequent events. After this visual tour, you will see the scenery through different eyes on your next vacation!

Supplemental Creation Programs

7. Bible, Science, and Earth History (Dave or Mary Jo Nutting)

Do science and the Bible fit together? What is the relationship between faith and evidence? Learn why it is so important to understand the difference between scientific investigation and Biblical revelation. Discover how to integrate science and Scripture using the Biblical model of earth history, from Creation through the Fall and Flood and beyond. God's Word and His World really do agree. (Longer version of this lecture: Part 1 focuses on Creation; Part 2 focuses on the Fall, the Flood and beyond.)

8. What To Do When You Don't Have an Answer (Dave Nutting)

What do you do if you just don't have an answer to those tough questions? This session will help Fire-Proof" you and your family to stand firmly on the Word of God. It gives answers for common "proofs" of evolution and teaches you to ask the right questions. Dave shows you how to use the "STOP" method when you have no clue how to answer an evolutionary argument. This session is GREAT for students!

9. So What? What Difference Does It Make? (Mary Jo Nutting)

The Bible tells us that we were created in the image of God – evolution says we are products of time and chance, just glorified apes. What difference does it make for our daily lives in the 21st century? Using stories and personal illustrations, Mary Jo shows how beliefs about creation and evolution impact 3 main areas of life: social, spiritual, and personal. She encourages young people and adults to find true meaning and purpose in life by trusting their Creator and discovering His plan for their life.

10. It's About Time (Dave Nutting)

Just how old is this place called Earth? Dave uses scientific evidence, good humor, and high quality graphics to help you discover why the evolutionary assumption that the earth is ancient isn't necessarily true. He exposes the assumptions behind traditional dating methods, demonstrates major problems with long-age dating techniques, gives examples of other dating methods that give younger ages, and shows that geologic formations which are conventionally thought to require eons of time to form, can and do form in moments.

11. Refuting Compromise (Dave or Mary Jo Nutting)

Can you really trust the Bible? Did God use evolution as His means of creating? Were the days in Genesis 1 really days, or were they periods of time millions of years long? This program explores ways in which Christians have tried to reconcile evolution with the Bible, and demonstrates the difficulties of these compromise positions. It encourages participants to stand firmly on God's Word, beginning in Genesis.

12. Creation Evangelism (Dave and/or Mary Jo Nutting)

The Gospel begins in Genesis. The Creator of the universe is also our Savior. In this presentation, Dave and Mary Jo share stories and testimonies of God's faithfulness in allowing them to share the message of creation and the cross here in the States and to the ends of the earth. You will be encouraged by hearing evidence of God's provision and protection, and challenged to follow God wherever He leads you. Join us for an exciting adventure in world missions.

Additional Programs:

13. Lessons from Nature (Dave Nutting)

In Proverbs 6, we are told to go to the ant and learn. What can we learn from creation? Join Dave Nutting as he shares fascinating "Creature Features" to bring important and timely "Lessons from Nature." Using colorful, interesting, and often unusual illustrations, Dave draws parallels from creation that apply to our own lives and the lives of our children. This program is appropriate for elementary-aged students through adults, so bring your family and friends.

14. You *Can* Do It! A Homeschool Pioneer Shares Challenges and Insights (Mary Jo Nutting)

What was it like in those early days of homeschooling? What has stood the test of time and what would I do differently? Using personal experience and insights from Scripture, Mary Jo presents a commonsense approach to homeschooling based on the principles of Design, Discipleship, and Dedication. With compassion and enthusiasm, she loves to encourage both newcomers and weary veteran homeschoolers that with God's help and some simple understanding, "You Really *Can* Do It!"

Bios for Dave and Mary Jo Nutting



Dave Nutting is the Co-founder and Director of Alpha Omega Institute. He is a former evolutionist who "evolved" into a creationist after studying the scientific issues. Dave has been giving creation seminars at churches, universities, public and private schools for 30+ years, with audiences ranging from young children to groups of medical students and doctors. He holds M.S. degrees in mathematics and geology and has taught both on the high school and college level. Dave is noted for his understandable, non-abrasive, down-to-earth teaching style, and high-quality visuals that make programs easy to understand even for children.

Mary Jo Nutting is the Co-founder and Assistant Director of Alpha Omega Institute. Together with her husband, Dave, she has traveled and taught creation for more than 30 years. Mary Jo has an M.S. degree in biology, with a heavy concentration in science education. She is an excellent communicator, has taught at the high school and college

levels, and has also home-schooled (road-schooled) their 2 grown sons. Mary Jo is passionate about God and His Word. She enjoys sharing evidence from science and the Bible with both believers and skeptics.

Nitty Gritty Details:

Financial considerations:

We ask for the church to pick up our travel expenses including lodging and mileage at the normal business rate or actual airfare. Expenses can be shared if several events are scheduled on one trip. We do not charge a specific fee beyond that, but ask the sponsoring group to take a love offering from those who attend. We would also ask the sponsoring group to provide an extra honorarium for Alpha Omega Institute, if possible. This is not required, but is certainly appreciated. It is AOI's desire is to minister even if the sponsoring group cannot afford to help with expenses.

Equipment Needed:

1. PowerPoint Projector: We plan to bring a laptop computer and our projector, but a back-up projector is always helpful. Sometimes it works better to use your projector, depending upon the set-up.
2. Large screen or blank wall at front of room.
3. Lighting: best if the screen area can be darkened, while still allowing lighting on the speaker and audience.
4. One or two microphones: lapel mike preferred; hand-held next best.
5. Resource Tables: generally 4 or more 8' tables (or 6'), depending upon size of facility and anticipated attendance.

Publicity Materials:

We prefer that you use the fliers, bulletin inserts, and posters that have been developed especially for our *Discover Creation* events. They are attractive, colorful, and reasonably priced. You may download them from our website or order them through our office 970-523-9943 after the seminar details have been confirmed. We can also provide newspaper and media spot templates. Note: Often, we can do a long-distance radio interview to provide information and help promote your seminar. Check with your local Christian or secular station to see if that would be a possibility.

References:

References are available upon request.

We look forward to serving you!

Check our website for more information: www.DiscoverCreation.org

